

VK-71

## VACUUM BREAKERS / STAINLESS STEEL

### GENERAL FEATURES

High pressure may occur during the use of steam lines and steam equipment. While cooling the lines, the steam inside is getting condensate. Due to transformation of steam into water, volume and pressure are decreasing and vacuum will occur.

Crima Steam Line VK-71 vacuum breakers work like check valve and it prevents the system from vacuum by taking in air. When the device is given steam again, pressure will increase so that device will stop working. They are small size vacuum breakers designed for general purpose applications on steam or condensate lines.

The VK-71 Vacuum Crusher should be installed vertically with the system connection is at the bottom.

**Product Material**

**Body and Cover:** AISI 304 Stainless Steel

**Inner Part:** Stainless Steel

**Connection:**

Threaded

**Nominal Diameter:**

DN15 (1/2")

**Pressure:**

Max. 25 bar

**Min. ΔP Openin Pressure:**

0,17 bar

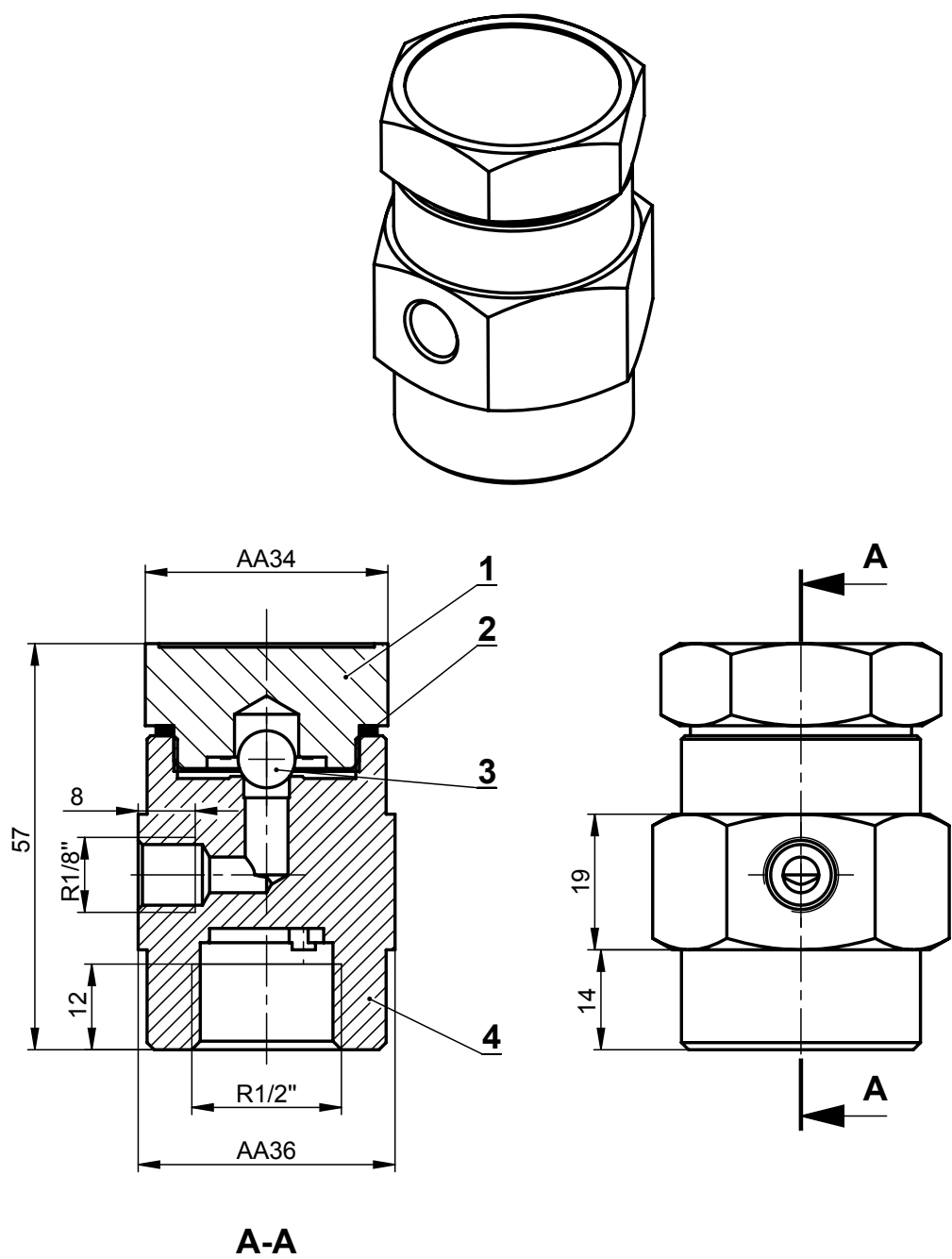
**Working Temperature:**

Max. working temperature 400 °C

**Applications:**

- Serpentine Systems
- Heat Exchangers
- End of the Line in Steam Systems
- Steam Collectors

VK-71 VACUUM BREAKERS / STAINLESS STEEL



PART LIST		
No	Part	Material
4	Body	AISI 304
3	Ball	AISI 440 C
2	Gasket	AISI 304
1	Cover	AISI 304